



BURLINGAME
CHAMBER of COMMERCE

Fall Burlingame Business

October 6, 2016

- ▶ Creating a Strong Local Economy
 - ▶ Promoting the Community
- ▶ Providing Opportunities to Build Relationships
- ▶ Representing the Interests of Business with Government

Burlingame Chamber Joint Mixer *with SMCCVB*



SAN MATEO COUNTY

SILICON VALLEY
CONVENTION AND VISITORS BUREAU

Join us, along with SMCCVB members, on Thursday, October 20 from 5:00-7:00pm for the October 'Harvest from the Farm' Member Mixer at DoubleTree by Hilton San Francisco Airport in Burlingame. The mixer will be held in the Ballroom and will feature food from As Fresh as it Gets award winner, 37 North Restaurant! Make sure to bring plenty of business cards. Please RSVP to info@burlingamechamber.org or call (650) 344-1735.

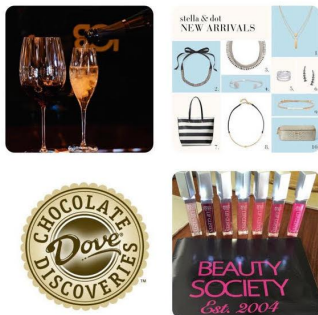
United Health Credit Union Member Appreciation Day

In celebration of their 60th anniversary, United Health Credit Union (UHCU) is hosting a Member Appreciation Day on Saturday, October 8th from 11:30am-3:30pm at their branch in Burlingame. **Please RSVP by October 3rd by emailing**



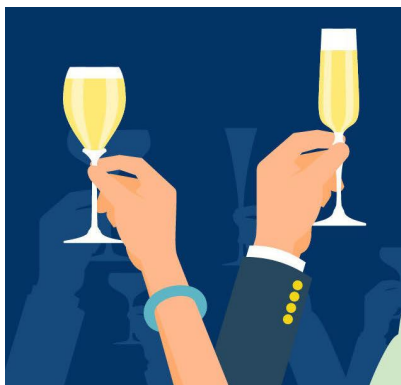
info@unitedhealth.org or by calling 650.231.1300, opt. 2. United Health will also offer special auto loan rates for the entire week leading up to the event with rates as low as 1.99%APR. Visit www.unitedhealthcu.org for more details. [Click here to download the flyer.](#)

[Download The Sept. List of Burlingame's New Businesses & Residents Here!](#)



Ladies Night At Gigi's Boutique

October 19th at 5pm, head to Gigi's Boutique for an evening featuring Stella & Dot, Dove Chocolate, and Beauty Society! Located at 1365 Broadway, Burlingame 94010.



Leadership Program's 25th Anniversary

Thursday October 20th from 5:30pm-8:30pm at the Bay View Dining Room in the College of San Mateo, celebrate the Leadership Program's 25th Anniversary! For details and to RSVP go to <http://leadershipprogram.net/25th-anniversary-dinner>.



PG&E's Economic Development Rate

The PG&E's Economic Development Rate offers qualifying, larger-load customers a 12% or 30% rate discount on their electric bill for 5 years. To qualify, a business must be new to California, expanding within California, or retaining operations in California. For more information, visit www.pge.com/economicdevelopment,

email ateconomicdevelopment@pge.com, or phone at 1-877-202-4276.

Welcome To Our Newest Members!

California Spice Basket, Inc.

Food Manufacturing

306 Lang Road

650-771-6100

Email: dana@caspicebasket.com

Website: www.caspicebasket.com

Dana Abarca

California Spice Basket, Inc. is a spice blending company, who will help you develop your unique food product whether it is a seasoning blend that you have created and want to have produced and packaged or our existing blend that you would like to market.

California Spice Basket, Inc. sells Herbs, Spices, Dehydrated Vegetables, Chilies, Marinades, Cures, Seasonings, Rubs, Soups, Dips, Ethnic Blends.

Coldwell Banker/Chuck Cochran

Residential Real Estate Sales

181 Second Avenue, Suite 100

San Mateo, CA 94401

650-678-8210

Email: ccochran@cbnorcal.com

Chuck Cochran

Create What You Prefer

Business Consultant

701 Highland Avenue, Suite 5

650-380-1597 Fax: 650-284-2131

Email: mobaire@gmail.com

Marika O'Baire-Kark

Do you often feel exhausted by the stress of life? Do you ever wonder how one person can do all you have to do? You can rise above all the anxiety of life, allow multiple viewpoints, and reach a sense of peace. You can create the joy and freedom of an enlightened being living deliberately; cherishing others, leading and engaging in their best; experiencing much more success in work, finances, relationship, study, and play.

Giftvolo

E-Commerce

666 Portofino Lane

Foster City, CA 94404

Email: shelly@giftvolo.com

Website: www.giftvolo.com

Shelly Gupta

Giftvolo is a new concept in gifting. Consumers can gift services from local merchants to their friends and family. Services make thoughtful, memorable, eco-friendly gifts. Gift local services to promote local businesses, acquire new

customers, increase sales, build loyalty and improve online presence.

Hillbarn Theatre, Inc.

Community Theatre

1285 East Hillsdale Boulevard

Foster City, CA 94404

650-349-6411 Ext. 2

617-922-8234

Email: phyllisgarland@hillbarntheatre.org

Website: www.hillbarntheatre.org

Phyllis Garland

Since 1941, the historic Hillbarn Theatre has served the San Francisco Bay Area

"To create theatre with the community, for the community, striving always for excellence in production and education."

We bring artists and audience together as part of our intimate Hillbarn family to experience engaging and inspiring theatrical productions. Our select program themes entertain, explore the joys and sorrows of our common human experience, and celebrate our diversity. We strive to enhance and enliven the arts and entertainment culture of our community.

HIP Housing

Non-Profit

800 S. Claremont, #210

San Mateo, CA 94402

650-348-6660 Ext. 342

Email: asobczak@hiphousing.org

Website: www.HIPhousing.org

Alie Sobczak, MSW

HIP Housing, a non-profit organization with over 40 years of housing experience, is reaching out to the community to promote its Home Sharing program. The Home Sharing program matches persons who have a room to rent in their home in San Mateo County with persons who live, work, attend school or have a housing voucher for the County. HIP Housing helps to connect people in living arrangements whereby a home seeker pays rent or exchanges services. There is no fee to participate.

Howie & Smith

Law Firm

1777 Borel Place, Suite 1000

San Mateo, CA 94402

650-685-9300 Fax: 650-685-3967

Email: howielaw@howielaw.com

Website: www.howielaw.com

Audrey Smith and Robert ("Skip") Howie

We are an "AV" (top) rated civil litigation law firm. Our practice includes trial and appellate advocacy, client counseling, and transactional services for plaintiffs and defendants in cases across the civil spectrum, including real estate and landlord-tenant disputes, premises liability, elder care law, public entity law, personal injury and products liability, insurance coverage, HOA law and construction defect cases, business contract/tort cases, and employment law. We work closely with our clients to ensure an efficient, effective, and realistic resolution to legal problems.

Il Piccolo Caffe

Café, Restaurant, Catering
1219 Broadway Avenue
650-348-4147
Email: ilpiccolo1990@gmail.com
Website: www.ilpiccolocaffe.com
Elizabeth Barnard

Founded on our coffee, il Piccolo is a cozy neighborhood Caffè featuring, Italian - American breakfast and lunch. We offer full service Catering; menu and budget planning, business meetings, on - site, pick ups or drop offs, il Piccolo is happy to help. Need a place to host your baby showers, receptions, birthdays, cocktail parties, wedding rehearsal dinners, fundraisers or more, our Caffè is the perfect venue.

Italy in Style Travel

Travel Company
205 Howard Avenue
242-8212
Email: leonora@italyinstyletravel.com
www.italyinstyletravel.com
Leonora DiMauro

Italy in Style is a travel company owned by a native Italian with the passion to share her Italy and help travelers experience the Italian way of life. We specialize in creating trips that match your interests and make most of your budget and the time you have available, villa rentals, destination weddings and design itineraries for groups interested in food & wine, photography, yoga and more.

Keller Williams Peninsula Estates/Joe Polyak

Realtor
1430 Howard Avenue
415-595-2647
Email: jpolyak415@gmail.com
Website: www.joepolyak.com
Joe Polyak

Keller Williams Peninsula Estates is the premier real estate sales team in Burlingame. They specialize in working with seniors, probate and trust sales, and luxury real estate marketing.

Lemonade

Restaurant
1152 Burlingame Avenue
650-524-5003
Email: burlingame@lemonadela.com
Website: www.lemonadesf.com
JoAnn Cianciulli

The acclaimed California fast casual restaurant known for its fresh vegetable based fare is open daily in Downtown Burlingame. Lemonade's unique and seasonally changing menu provides healthy, farmer's market-inspired food at an affordable price in a relaxed, eco-friendly space.

Limon Rotisserie*Restaurant*

1101 Burlingame Avenue
650-727-0050
Email: fran@limonsf.com
Francisco Perez

M. Pizzolon Construction*General Contractor*

921 Chula Vista
650-455-4095
Email: mike@mpizzolon.construction
Michael Pizzolon

Maries' Bridal*Bridal Boutique*

229 Park Road
650-347-3591 Fax: 650-347-3599
Email: mtabdallah@gmail.com
Website: www.mariesbridal.net
Marie Thereze Cole

Mindzone Mental Training*Sport Psychology/Mental Training*

240 Chesham Avenue
San Carlos, CA 94070
650-346-6998
Email: mindzone.success@gmail.com
Dana Magdaleno

Mortgage Master*Mortgage Financing*

1860 El Camino Real, Suite 106
650-275-2202
Email: jthibodeau@mortgagemaster.com
Website: www.mortgagemaster.com/jthibodeau
Jed Thibodeau

As a Senior Loan Officer, I help existing homeowners, future homeowners, real estate investors, and aspiring real estate investors identify the lowest cost financing structure, among the many mortgage program choices available, which allows them to reach their financing objectives. I then facilitate loan delivery with a process designed to adapt to and interfere as little as possible with their busy schedules. I provide my customers with the right loan program, quickly and efficiently.

Mortgage Services*Mortgages*

181 Second Avenue, Suite 307
San Mateo, CA 94401
Email: val@emortgageservices.net
Valerie Oliver

At Mortgage Services we have many lenders to choose from. I have been in the mortgage business for over 30 years and I pride myself in helping my clients through the 'mortgage maze' with ease. I do purchases, refinances and reverse mortgages. Please call me if you want to purchase a home, refinance, get a reverse mortgage or if you want to plan for the future.

Paychex

Payroll Services/Human Capital Management

1111 Bayhill Drive

San Bruno, CA 94066

845-699-2493 Fax: 866-223-6217

Email: rjrodriguez@paychex.com

Website: www.paychex.com

Ricardo Rodriguez

Dedicated to helping your business succeed, Paychex provides the best in payroll and HR related services. From managing employee pay, time and attendance solutions, to handling state unemployment claims and assisting in calculating true workers comp premium amounts based on actual wages, Paychex gives you peace of mind and more time to invest working ON rather than IN your business!

Premier Financial Alliance

Life Insurance and Fixed Annuities

P.O. Box 280464

San Francisco, CA 94128

650-759-0289

Email: ssubedar50@gmail.com

Website: www.pfaonline.com

Shahida Subedar

Did you know that life insurance has changed over the last nine years? Well, just like your cell phone that has multiple purpose - (such as texting, talking, and surfing the internet to name a few), so does life insurance that has multiple purpose - death benefit, living benefits and tax-free retirement. Well that's true. I'm on a crusade to change the country, one life, one family, one relationship, one dream at a time.

State Farm Robert Fong Agency

Insurance

1717 El Camino Real

Millbrae, CA 94030

650-588-7973 Fax: 650-350-4088

Email: freddy@robertfong.com

Website: www.robertfong.com

Fresddy Musa

Voila Staging and Design Consultant

Staging, Design and Consignment Retail Furnishings

20 North Railroad

San Mateo, CA 94401

650-906-9312 Fax: 650-343-2118

Email: Olinda-newsome@yahoo.com

Olinda Newsom

World Financial Group/Transamerica

Finance, Retirement Planning, Insurance

500 Airport Boulevard, Suite 110

415-531-3886

Email: amy-lai@sbcglobal.net

Amy Lai

Worried about not having enough income, or savings for yourself, or your loved ones in case of un-expected early illness?

We all die once...but we may get sick more than once...It's not if we get sick, it's

When we get sick.

Find out how Family Illness Income Program can help you to better protect you and your family. We have solutions to better protect your savings and retirement planning.

Our Renewing Members

21-50 Years

Alana's Café '93
Atlas Asia-Pacific '94
Tim Auran, Realtor® '93
Bank of the West '90
BCE (Burlingame Community for Education) '87
Ecco Restaurant '94
Embassy Suites '86
Hill's Pool Service '92
Hilton Hotel SF Airport '83
JSI Shipping '88
Lions Club, Burlingame '92
McGuigan & McGuigan, CPA's '92
Millbrae Lock '90
Offield Ventures, LP '57
P C Teas Company, Inc. '91
Pacific Gas & Electric Company '66
Samaritan House '94
Ted L. Rausch Company '89
UPS Store #2354 '93
Zeka Group, Inc. '89

11 - 20 Years

Allen Drywall & Associates, Inc. '99
Commute.org '02
Cresco Express-Burlingame '05
Dolan's Windows & Doors '96
Gray's Paint & Wallpaper '03
Kwik Data Systems '03
Leung Dental Office '97
MCM Engineering, Inc. '01

6 - 10 Years

Alert Door Service, Inc. '09
Art Attack! '08
Burlingame Airport Parking '06
Eric Brand Furniture '07
Mingalaba Restaurant '09
Music at Kohl Mansion '08
SDI Insulation, Inc. '08
The Larose Group '07
Timberline Tree Service, Inc. '08

1 - 5 Years

Adna's Automotive '15
Alive Insurance Services, Inc. '14
Alyssa Goldsand Brodeur/Lic. Clinical Social Worker '15
Balsam Hill '13
Broadway Sitters, LLC '12
Brown/Patki Leasing @ Relocation Team '14
Burlingamer, LLC. '15
Chauvel & Glatt '12
Classic Amusement '11
Coconut Bay '11
Daily Journal '14
Gigi's Boutique '14
I9 Sports '14
Laughlin Legal-Family Law Group '13
LFS Asset Management '15
Mathnasium of Burlingame - Millbrae '15
McGuire Real Estate '14
Nerium International '15

Mills Estate Villa '96
Mission Hospice '97
Mollie Stone's Market '98
Patronik Designs '96
Rebarts Interiors, LLC '04
S.L. Beckheyer Insurance
Agency/Farmers Ins. '03
Solo Bambini '04
The Nueva School '98
United Health Credit Union '02

New England Lobster Co., Inc. '12
New York Life '13
Office of SM Co. Supervisor Dave
Pine '11
Old Republic Title '15
Revelry Indoor Cycling & Fitness'15
Rise Pizzeria '15
Shama Thai Massage '15
Synergy HomeCare of San Mateo '13
The Garage Burlingame'15
The Westin San Francisco Airport '14
Toll Global Forwarding '12
Union Bank '12
Urban Bistro '11
Waddell @ Reed/Barbara Sabol
Rosasco '13
Zell & Associates '14

October Calendar

October 02, 09, 16, 23, 30 Fresh Market - 9:00 a.m. - 1:30 p.m. Park Road
October 03 City Council Meeting 7:00 p.m., City Hall
October 06, 13, 20, 27 Fresh Market - 3:00 p.m. - 7:00 p.m. Park Road
October 10 Columbus Day - Chamber Office Closed
October 11 Board of Director's Meeting - 12 noon - Sapore Italiano
October 11 Planning Commission Meeting - 7:00 p.m., City Hall
October 17 City Council Meeting 7:00 p.m., City Hall
October 20 Networking@Night - DoubleTree Hotel - 5:30 p.m. - 7:00 p.m.
October 24 Planning Commission Meeting - 7:00 p.m., City Hall

November Calendar

November 06, 13, 20, 27 Fresh Market - 9:00 a.m. - 1:30 p.m. Park Road
November 07 City Council Meeting 7:00 p.m., City Hall
November 11 Veteran's Day - Chamber Office Closed
November 14 Planning Commission Meeting - 7:00 p.m., City Hall
November 21 City Council Meeting 7:00 p.m., City Hall
November 24 Thanksgiving Day - Chamber Office Closed
November 28 Planning Commission Meeting - 7:00 p.m., City Hall

December Calendar

December 02 City Tree Lighting/Holiday Open House - 5:30 p.m. - 8:00 p.m.
December 04, 11, 18 Fresh Market - 9:00 a.m. - 1:30 p.m. Park Road
December 05 City Council Meeting 7:00 p.m., City Hall
December 12 Planning Commission Meeting - 7:00 p.m., City Hall
December 19 (tentative) City Council Meeting 7:00 p.m., City Hall
December 26 Day after Christmas - Chamber Office Closed



Visit our website at www.burlingamechamber.org

Burlingame Chamber of Commerce | 417 California Drive | Burlingame, CA

Place article copy here. Be sure to make the articles short and concise as people tend not to read much more than a couple of paragraphs. Place article copy here.